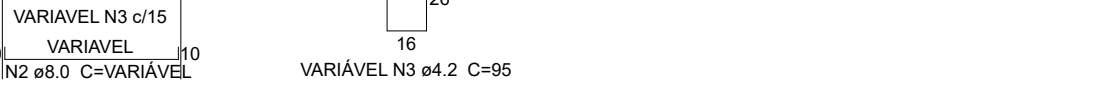
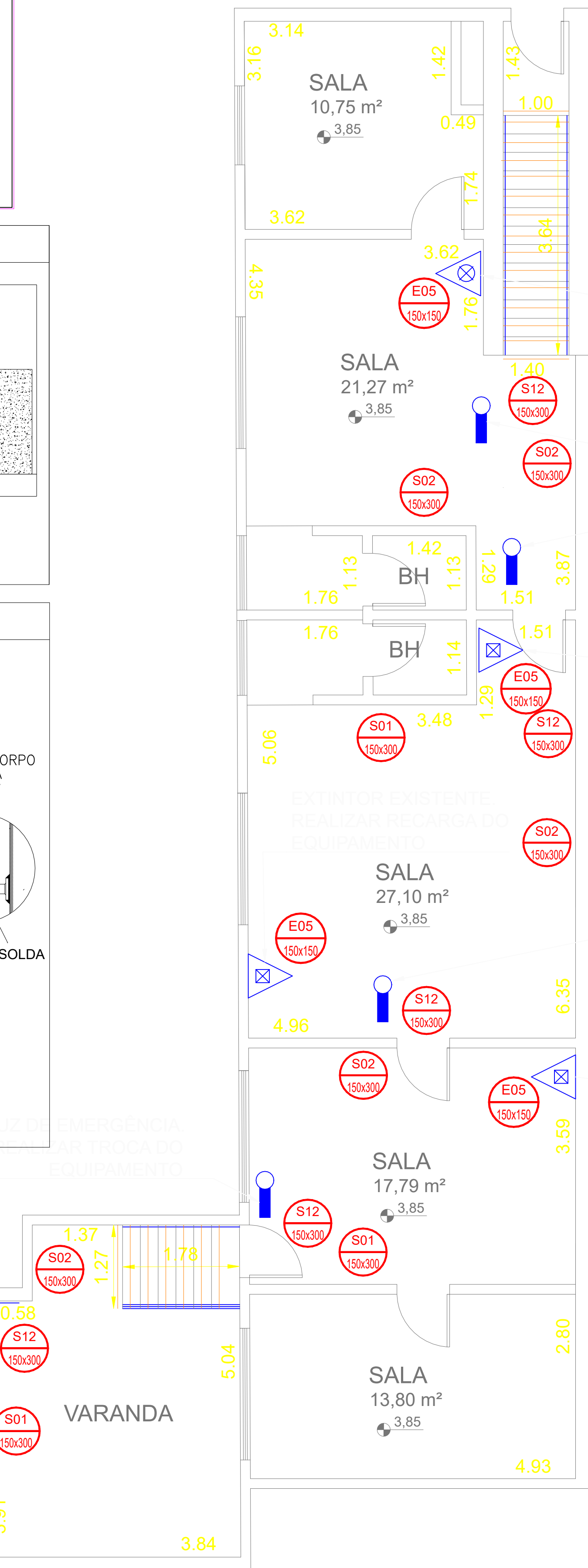


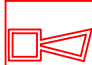




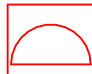

[illegible]

Incêndio			
Qtd.	Und.	Dimensão	Descrição
1	pc	—	ÁGUA PRESSURIZADA — 2A
1	pc	—	PÓ QUÍMICO SECO BC — 20 B:C



Qtd.	Und.	Dimensão	Descrição
2	pc	—	ÁGUA PRESSURIZADA – 2A
2	pc	—	CENTRO DE MEDIÇÃO DE GÁS
1	pc	—	GÁS CARBÔNICO BC – 5 B/C
4	pc	—	ILUMINAÇÃO DE EMERGÊNCIA DE ACLARAM
5	pc	—	PÓ QUÍMICO SECO BC – 20 B/C



Icon	Category	Code	Reference Code
	Fire Extinguisher	E1	<p>1. Fire Extinguisher</p> <p>2. Fire Alarm</p> <p>3. Fire Alarm Control Panel</p> <p>4. Fire Alarm Sounder</p> <p>5. Fire Alarm Bell</p> <p>6. Fire Alarm Bell</p>
	Fire Alarm Control Panel	E2-E3	
	Fire Alarm Bell	E5	
	Fire Alarm Bell	E7	
	Fire Alarm Bell	E8	
	Fire Alarm Bell	E9	
	Fire Alarm Bell	E17	<p>1. Fire Extinguisher</p> <p>2. Fire Alarm</p> <p>3. Fire Alarm Control Panel</p> <p>4. Fire Alarm Sounder</p> <p>5. Fire Alarm Bell</p> <p>6. Fire Alarm Bell</p>

	EQUIPAMENTOS EXISTENTES

UTILIZAR OS EQUIPAMENTOS DE PREVENÇÃO E COMBATE A INCÊNDIO EXISTENTES. REALOCAR TODOS OS EQUIPAMENTOS CONFORME PROJETO APROVADO PERANTE O CORPO DE BOMBEIROS DO ESTADO DE SÃO PAULO.

[illegible]

OBSERVAÇÃO: SERÁ ADICIONADO 10% DA METRAGEM LINEAR DOS MATERIAIS PARA EVENTUAIS INTERFERÊNCIAS NA INSTALAÇÃO

participant name & ID number		date information was obtained from provider (dd, & yy)	
participant occupation		participant's occupation & corresponding control activity	
date of collection		location & time of collection	
1	2	3	4
(fill sample)			
(fill in the box)			(fill in the box)
(fill in the box)			